

Hauliers & Driver Handout – UKP Worldwide



May 2024

This handout is designed for hauliers and drivers heading to UKP Worldwide (UKPW) ETSF (Customs) and it contains directions to UKPW including low bridge locations as well as ETSF opening hours, Westcott Park facilities and Motorway Service locations.

Location: UKP Worldwide ETSF, Unit 12 Century Court, Westcott Venture Park, Aylesbury, HP18 0XP.



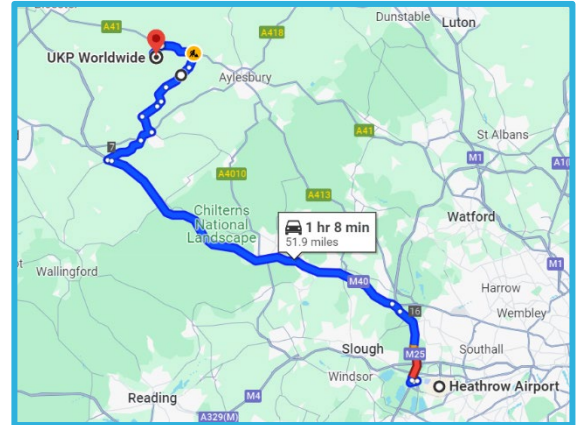
UKPW what3words: Leaky.parked.boats



Directions to UKPW ETSF (Customs)

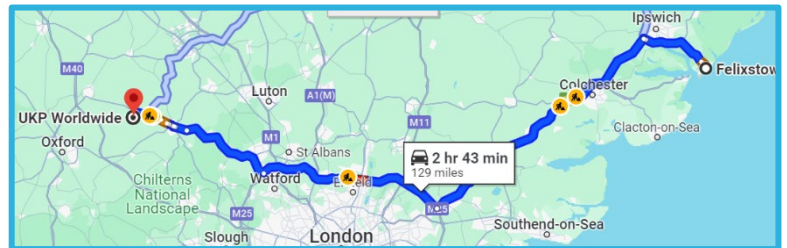
Heathrow Airport (LHR) to UKPW ETSF, HP18 0XP

- Head north on Terminal 5 Roundabout towards Wright Way
- Continue to M25. Take the exit for M25 (N)
- Take M40 to A329 in Oxfordshire. Take exit 7 from M40
- In 17.2 miles turn right onto A329
- In 3.3 miles at the roundabout, take the 2nd exit onto A418
- In 1.2 miles at the roundabout, take the 1st exit onto Thame Rd/B4011
- In 1.5 miles at the roundabout, take the 2nd exit onto Chearsley Rd
- In 1.5 miles continue onto Crendon Rd
- In 0.5 miles continue onto Winchendon Rd
- In 1.4 miles continue onto Main Rd
- In 2.4 miles continue onto Waddesdon Hill
- In 1.2 miles turn left onto A41
- In 2.8 miles at the roundabout, take the 2nd exit onto Wellington Drive
- Take the lefthand lane at the barriers and wait for the Gatehouse Security staff to lift the barrier
- Once through the barrier continue on Wellington Drive following the blue signs for UKP Worldwide ETSF Customs.



Felixstowe to UKPW ETSF, HP18 0XP

- Get on A12 from A14
- Follow A12 and M25 to A41 in Hertfordshire. Take the A41/Watford exit from M25
- Follow A41 to Main Ave in Buckinghamshire
- At Kings Langley Interchange, take the 3rd exit onto A41
- In 17.5 miles at Woodlands Roundabout, take the 2nd exit onto Aston Clinton Rd/A41 (continue to follow A41)
- In 2.1 miles at the roundabout, take the 3rd exit onto High St/A41
- In 0.3 miles at the roundabout, take the 3rd exit onto Vale Park Dr/A418
- In 459 ft at the roundabout, take the 1st exit onto Upper Hundreds Way/A413
- In 0.4 miles at the roundabout, take the 1st exit and stay on A413
- In 72 ft at the roundabout, take the 2nd exit onto Bicester Rd
- In 0.5 miles at the roundabout, continue straight onto Bicester Rd/A41
- In 0.4 miles at the roundabout, take the 2nd exit and stay on Bicester Rd/A41
- In 1.3 miles at the roundabout, take the 2nd exit and stay on A41
- In 1.5 miles at the roundabout, take the 3rd exit and stay on A41
- In 3.4 miles at the roundabout, take the 2nd exit onto Wellington Drive
- Take the lefthand lane at the barriers and wait for the Gatehouse Security staff to lift the barrier
- Once through the barrier continue on Wellington Drive following the blue signs for UKP Worldwide ETSF Customs.



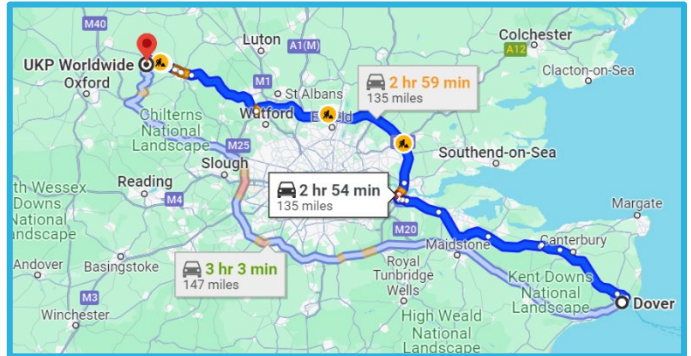
Making sure your business delivers

Hauliers & Driver Handout – UKP Worldwide



Dover to UKPW ETSF, HP18 OXP

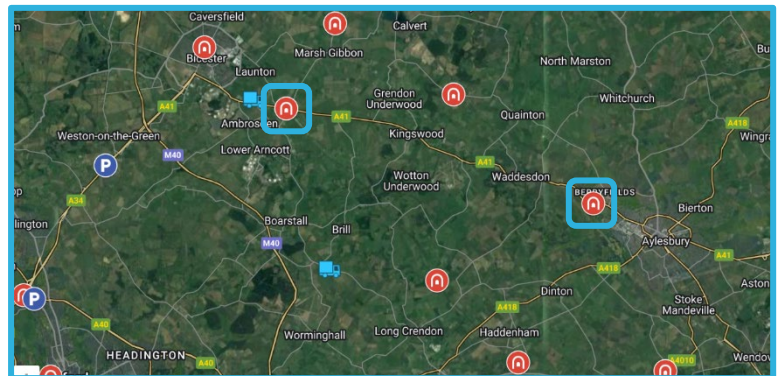
- Get on M2 in Boughton-under-Blean from A2
- Follow M2 to Watling St/A2
- Follow Watling St/A2, A296 and A282 to M25 in Purfleet-on-Thames
- Follow M25 to A41 in Hertfordshire. Take the A41/Watford exit from M25
- Follow A41 to Main Ave in Buckinghamshire
- At Kings Langley Interchange, take the 3rd exit onto A41
- In 17.5 miles at Woodlands Roundabout, take the 2nd exit onto Aston Clinton Rd/A41 (continue on A41)
- In 2.1 miles at the roundabout, take the 3rd exit onto High St/A41
- In 0.3 miles at the roundabout, take the 3rd exit onto Vale Park Dr/A418
- In 459 ft at the roundabout, take the 1st exit onto Upper Hundreds Way/A413
- In 0.4 miles at the roundabout, take the 1st exit and stay on A413
- In 72 ft at the roundabout, take the 2nd exit onto Bicester Rd
- In 0.5 miles at the roundabout, continue straight onto Bicester Rd/A41
- In 0.4 miles at the roundabout, take the 2nd exit and stay on Bicester Rd/A41
- In 1.3 miles at the roundabout, take the 2nd exit and stay on A41
- In 1.5 miles at the roundabout, take the 3rd exit and stay on A41
- In 3.4 miles at the roundabout, take the 2nd exit onto Wellington Drive
- Take the lefthand lane at the barriers and wait for the Gatehouse Security staff to lift the barrier
- Once through the barrier continue on Wellington Drive following the blue signs for UKP Worldwide ETSF Customs.



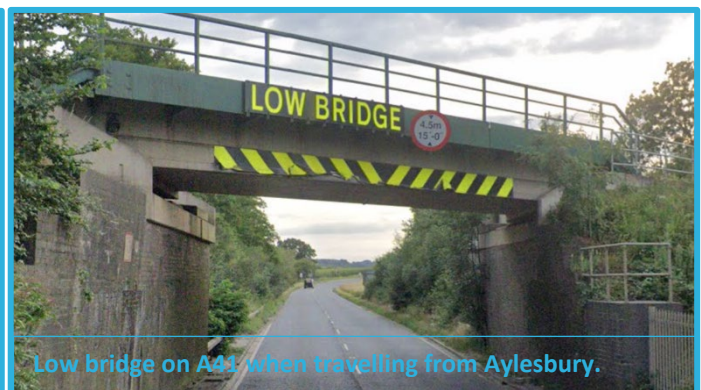
Low Bridges

There are two low bridges on the A41 en route to UKPW ETSF, one when travelling via Bicester and another when travelling via Aylesbury. These can be seen on the map below

Both bridges have a height restriction of 4.5m or 15'0".



Low bridge on A41 when travelling from Bicester.



Low bridge on A41 when travelling from Aylesbury.

Making sure your business delivers

Hauliers & Driver Handout – UKP Worldwide



Useful Links:

- Google HGV Alliance Low Bridges, Truck Stops and Weighbridge Directory: https://www.google.co.uk/maps/d/u/0/viewer?mid=14LloLXZYIKEqcYGj_00INpdCw7T_akY&hl=en_GB&ll=51.8400066421664%2C-1.0177831711588925&z=11
- Low Bridge Map created by Trucking Jobs: <https://www.truckingjobs.co.uk/2018/10/low-bridge-map-uk.html>

UKPW ETSF (Customs) Opening Hours & Westcott Venture Park Opening Times

Customs Opening Hours
Monday to Friday, 08:00-17:00 Sunday* 11:00-16:00 Closed Saturdays & Public Holidays <i>*Only for specific Hauliers by prior arrangement</i>
Warehouse Hours for Customs Clearance
Last delivery at 16:00 hours Monday-Friday and 15:00 hours on a Sunday. Arrivals after this time will be booked for the next working day and will need to rest up at the park entrance or a motorway service station
Westcott Venture Park Opening Hours
Westcott Venture Park is accessible 24 hours a day. If you arrive outside of the ETSF opening hours, you will be required to wait in the designated parking at the Gatehouse.



Onsite Parking & Toilet Facilities

Onsite parking is available at the Gatehouse entrance to Westcott Venture Park outside of ETSF opening hours. Toilet facilities are also available on site during and outside of ETSF opening hours (see map for details).

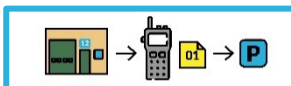
Arriving at ETSF During Opening Hours

When you arrive at UKPW ETSF during opening hours, please follow the below steps:

1. Pull up and park next to the Customs ETSF office.
2. Please bring your Customs Documents and Passport to the Customs ETSF office at Unit 12 Century Court.



3. Once booked in with ETSF staff they will provide you with a walkie-talkie and request that you wait with your vehicle.



4. ETSF staff will radio through and request you bring your vehicle to Unit 12 for customs clearance.



5. Once cleared, please return walkie talkie and collect the necessary documentation.

Making sure your business delivers

Hauliers & Driver Handout – UKP Worldwide



Truck Waiting Area After Check-in with ETSF Office

Once checked in with UKPW ETSF Customs office, please wait with your walkie-talkie in the below designated waiting area.

Please respect our neighbours whilst waiting:



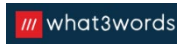
Toilet and shower facilities at The Gatehouse
what3words: [Transcribes.storyline.expensive](https://www.what3words.com/transcribes.storyline.expensive)



Parking When ETSF is Closed

As mentioned, when the ETSF is closed, hauliers and drivers can park at the Gatehouse car park at the Westcott Venture Park entrance, with toilet and shower facilities. There is also a café available between 07:30-14:30, Monday-Friday. NB: This is subject to change.

Gatehouse what3words: [Transcribes.storyline.expensive](https://www.what3words.com/transcribes.storyline.expensive)



Alternatively, it is recommended that drivers park up and wait at Motorway Services. The two closest to UKP Worldwide are:

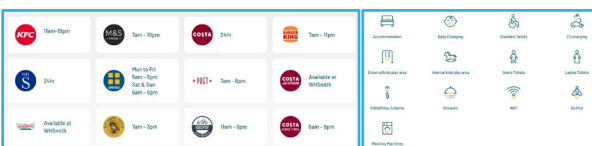
Cherwell Valley Moto Services

Location: M40, Junction 10. Northampton Road, Ardley, Bicester, Oxfordshire, OX27 7RD.

Journey time from Cherwell Valley Services to UKPW ETSF: 28 minutes approximately.

HGV Parking*: 2-24 hours - £30.00 HGV only or HGV with food voucher (£10.00) £32.00.

Facilities and on-site brands:



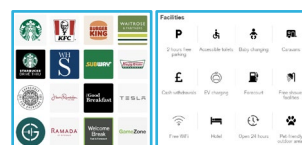
Oxford Welcome Break Services

Location: M40, Junction 8a. Thame Road, Waterstock, Oxfordshire, OX33 1LJ.

Journey time from Oxford Welcome Break Services to UKPW ETSF: 29 minutes approximately.

HGV Parking*: 2 hours free. Parking costs are displayed on-site.

Facilities and on-site brands:



*Information is correct at time of creation July 2022.

If you arrive outside of ETSF opening hours, we ask that you respect our neighbours and the countryside by driving carefully.

For further information visit: www.ukpworldwide.com/trucks.

Making sure your business delivers